



AVON | WEST
STRATFORD

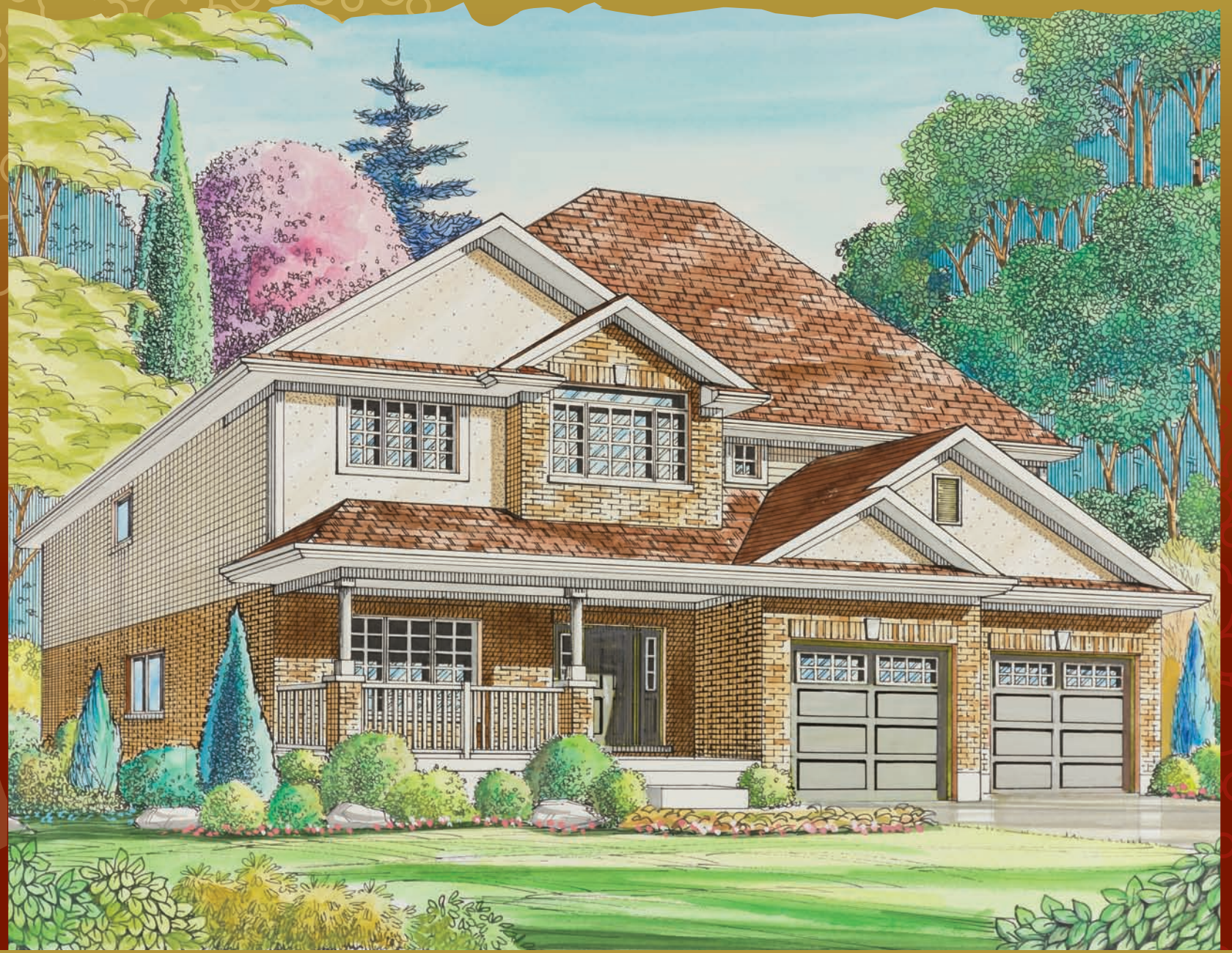
The Gregory

Square Footage: 2,914
Bedrooms: 4
Bathrooms: 2.5
Storeys: 2
Lot Width: 52 ft.

4 Bedroom, 2 storey, 2 1/2 baths, double garage doors, large front porch, main floor living room & laundry, oversized second floor master including walkin closet and ensuite.



Division of Werner Bromberg Ltd.

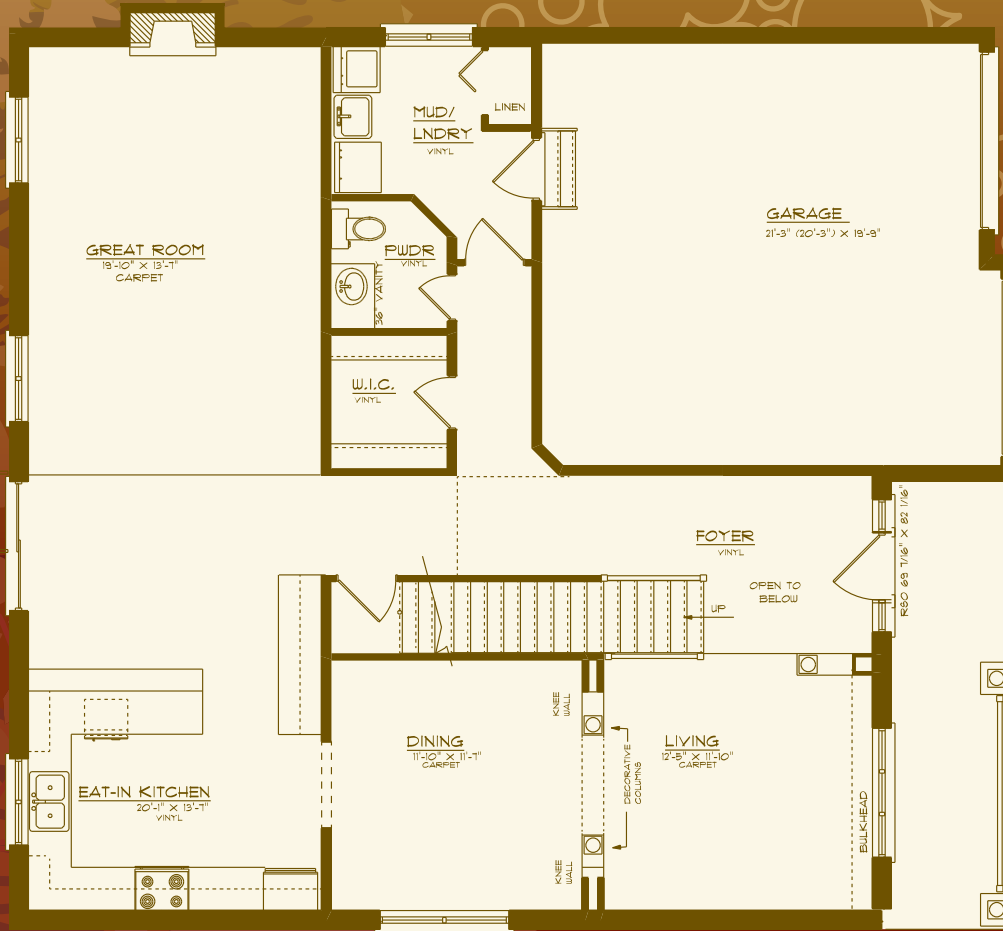




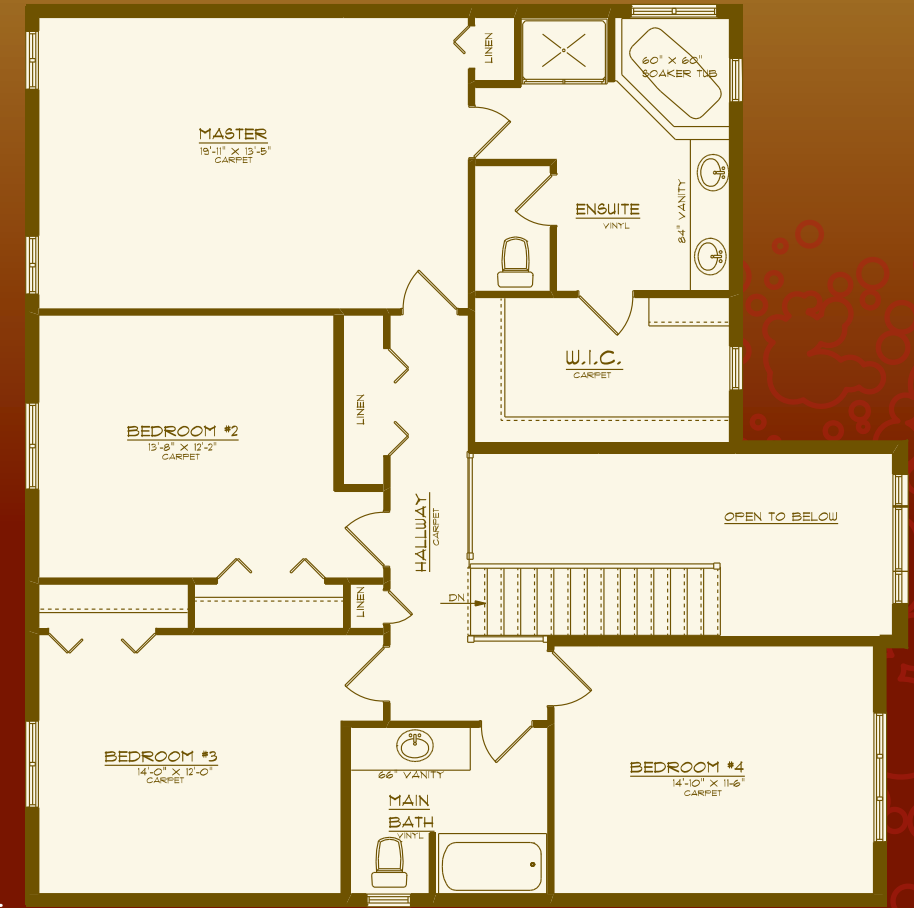
AVON | WEST
STRATFORD

The Gregory

2,914 sq. ft.



Main Floor
1,378 Sq. Ft.



Upper Floor
1,536 Sq. Ft.



Division of Werner Bromberg Ltd.

All drawings are artist concepts of the final product and may be revised and/or improved as necessitated by Architectural controls. All floor plans are approximate dimensions. Floor areas shown include "open to below" but do not include garage or basement areas. E. & O. E.

www.bromberghomes.com